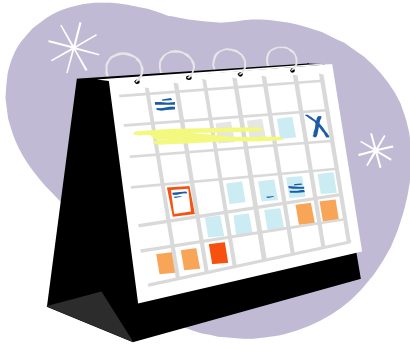


# Planning Your Education

## Medicine

**Description:** Medical education includes four years of medical school and three or more years of clinical training, depending on your selected field of medicine, known as “residency.”

**Recommended and Required Coursework:** Admission to medical school is highly competitive but, with planning and dedication, students can gain admission. Medical schools require serious undergraduate premedical training in science and math courses. Medical schools also look for well-rounded individuals who have taken humanities and social science coursework and participated in college and community activities. If you are interested in a career in medicine, start planning now, even if you are in high school. Talk to an academic advisor and visit your school library to check out materials on medical school admissions and requirements.



**Standardized Tests:** The Medical College Admissions Test (MCAT) is offered at various times throughout the year. For more information on the MCAT, write or call:

MCAT Program Office  
P.O. Box 40556  
Iowa City, IA 52243  
(319) 337-1357  
<http://www.aamc.org/students/mcat/start>



**Application Process:** Similar to dental school, many medical schools utilize an application service to facilitate the application process. The American Medical College Application Services (AMCAS) collects the required information from applicants and distributes the information to the medical schools. AMCAS accepts the application after June 1<sup>st</sup>. The AMCAS charges a fee for the first school applied to and a smaller fee for each additional school. The fee can be waived for students with financial need. To receive an AMCAS application, write to:

AMCAS  
Section for Student Services  
2450 N. Street, N.W., Suite 201  
Washington, DC 20037-1131  
(202) 828-0600  
<http://www.aamc.org/students/amcas/>

**Letters of Recommendations and Interview:** You will be required to provide two to three letters of recommendation from people who know you well. Two science letters from a professor that has taught you and can speak about your performance in the class, and one non-science letter. If your school has a Pre-Medical committee **it is required** that you send a Pre-Medical packet or letter. You will also be required to have an interview with the Medical School Admissions Committee.